

# Manual LED multifunction Exposure machine

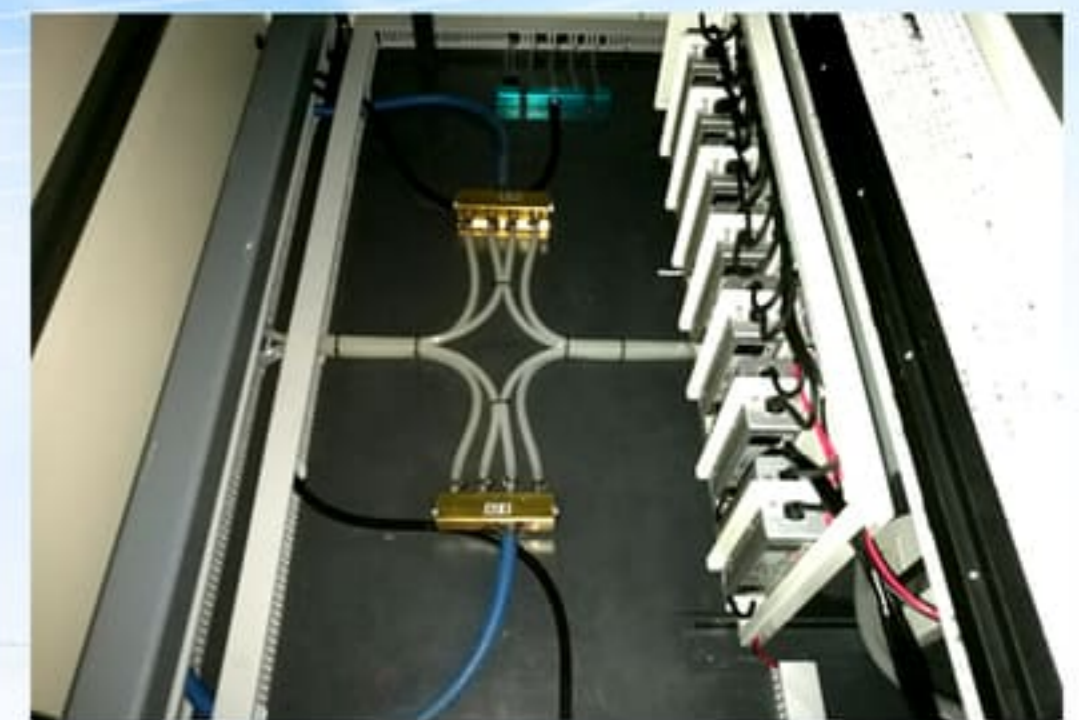
UV KST<sup>®</sup> 科视

## Incredible UV Exposure

KST-F12565-BLZX



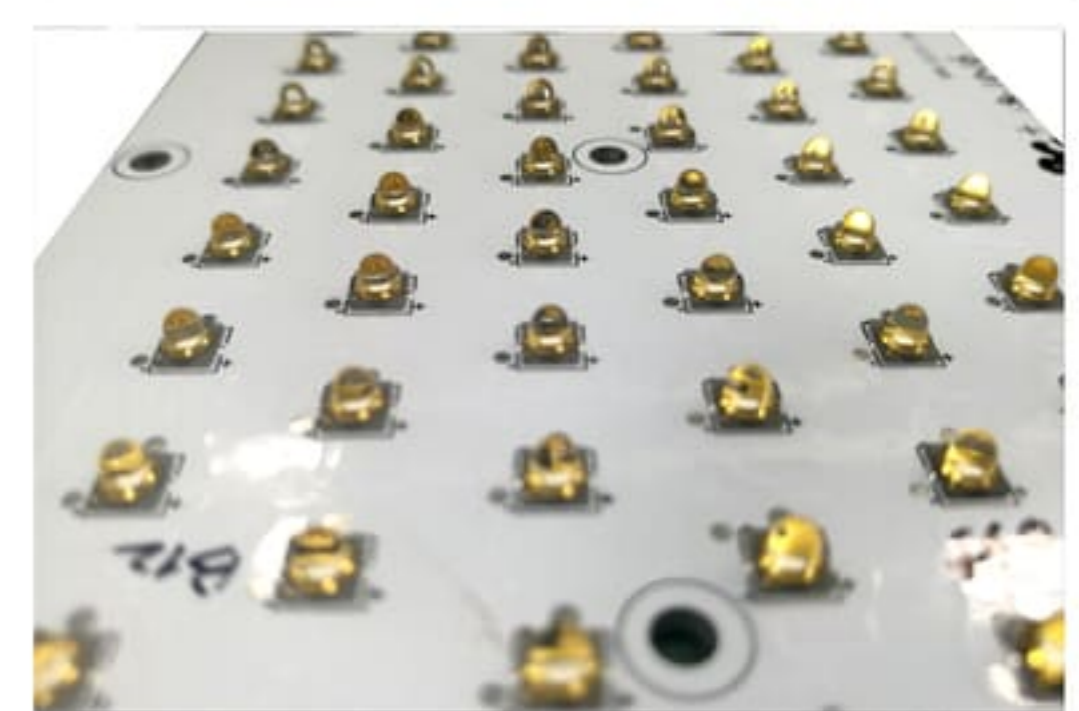
Inside the machine, it is orderly and neat



UV LED Light source and LED module

### Characteristics:

1. Multifunctional, freely switch exposing inner, outer layer, and solder mask (PISM) multi-color ink.
2. LED Technology, power savings, high efficiency, cost effective.
3. Multi wavelength, multi combination, achieves the best resolution.
4. Built in temperature monitor module, alarming when LED over temperature.
5. Automatic energy calibration and compensation, uniformity > 85%, some above > 90%
6. High precision constant current driving power supply design, reducing the current impact of LED, greatly prolongs the LED service life.
7. LED light source modular design that easy maintenance and replacement.



Aspheric optical lens



Model	KST-F10065-BLZX	KST-F12565-BLZX	KST-F15065-BLZX
Incredible UV Exposure	UVLED Parallel Lighting Source		
Exposure Mode	Double Sides exposing simultaneously		
Resolution	75 $\mu$ m (lens version, wet film thickness $\leq 20\mu$ m) / 100 $\mu$ m ((lens version, dry film thickness $\leq 40\mu$ m), other requirements shall be customized		
Exposure Size	1060mm $\times$ 650mm	1250mm $\times$ 650mm	1500mm $\times$ 650mm
Exposure time	$\leq 5$ S (main ink)	$\leq 5$ S (main ink)	$\leq 5$ S (main ink, doesn't suggest to use dry film if the table is too big)
Uniformity	$\geq 85\%$ (90% customizable Min/Max*100%) (Using KSTLED special energy meter)		
Exposure control	Light Intensity 0-100% adjustable/ exposure time adjustable		
Average power	<3.5KW	<4.0KW	<5.5KW
LED Cooling Type	Self-contained ice water cooling		
Control System	Human-machine interface+ PLC		
Optical glass	Mylar/ Glass		
Degree of Vacuum	$\leq -90$ Kpa		
HMI	10"Chinesc HMI		
Protective Function	1、LED Over Temperature Alarm; 2、 open-phase protection; 3、 Short circuit and overload protection:		
Air Pressure Requirement	N/A		
Exposure Room Ice Water Demand	7-12 $\square$ , flowrate: 5L/min, pressure: 2-3kg/cm <sup>2</sup> or own chilled water cooling exposure chamber		
Working environment	Dust-free	Temperature	Humidity
Overall Dimension(mm)	2810(L) $\times$ 1630(W) $\times$ 1750(H)	2810 (L) $\times$ 1820(W) $\times$ 1750(H)	2810 (L) $\times$ 2070(W) $\times$ 1750(H)
Power supply	380VAC/50Hz/20KVA Different country shall be customized		
weight	1000Kg	1100Kg	1200Kg